

## COASTAL REGION NEWS

### February 2021

#### **45 bat houses installed and repairs made to maternity roost**

Bats in the Clowhom River Watershed will benefit from 45 newly installed bat houses. A cluster of maternity boxes, which has been used by more than 600 bats, has been repaired and upgraded. This work will help ensure the survival of bats and their habitat in the watershed and surrounding communities. [MORE.](#)



An old cluster of maternity boxes (left) has been repaired and upgraded. Photo: Sunshine Coast Wildlife Project

#### **Riparian habitat enhanced at 12 sites along Cold Creek**

Eroding banks along Cold Creek near Campbell River are being stabilized with woven fencing, live stakes, and newly planted western hemlocks. Twelve sites, covering nearly 600 square metres have been treated through a project led by A-Tlegay Fisheries Society. The full report is now available. [MORE.](#)



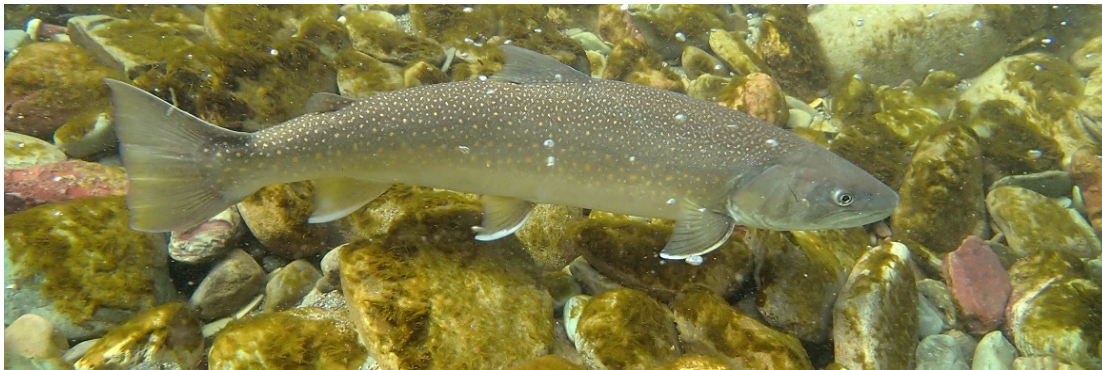
Sites identified to have steep eroding banks were treated with wattle fences. Photo: A-Tlegay Fisheries Society and Ecofish Research Ltd.

## Grant applicants to be notified in February

Thanks to everyone who submitted a grant application to deliver a project in 2021-2022. Our three-stage review and evaluation of each grant application is complete, and applicants will be notified of our board's decision by the end of this month. For those who are approved for funding, please read our [information kit](#) outlining next steps for approved grant applicants.

## Electrofishing surveys conducted on the Yalakom River

Electrofishing surveys conducted at 12 spatially distributed sites on the Yalakom River in the Bridge-Seton River Watershed by Coldstream Ecology showed four fish species: Chinook and coho salmon, bull trout, and rainbow trout/steelhead. Bull trout and rainbow trout/steelhead were the most abundant and widely distributed species observed. [MORE](#).



Bull trout. Photo: iStock, ML Haring

## Invasive reed canary grass treated in K'ómoks Estuary

Three priority areas in the K'ómoks Estuary, totalling 1,200 square metres, have been treated for reed canary grass. Spread of the invasive plant in the estuary has tripled since 2004, so this project by the Comox Valley Project Watershed Society aims to not only treat target areas but also test for the most effective treatment methods. [MORE](#).



Biologist Jennifer Sutherst stands next to trial of cardboard covering after reed canary grass has been mulched. Photo: Comox Valley Project Watershed Society

## Read our reports

Check out our updated [Coastal Region searchable spreadsheet](#) with links to the latest FWCP project reports now available on the Province of B.C.'s database. New reports include [spawning gravel additions in Elk Falls Canyon](#), and the [new fish ladder installed on Thompson Creek](#).





Read the [full report](#) about the installation of a new fish ladder on Thompson Creek in the Stave River Watershed. Photo: Fraser Valley Watersheds Coalition

## Free online presentations from our Peace Region!

If you missed our recent online presentations on fishers, bull trout and caribou, be sure to check out our coming sessions hosted in partnership with the University of Northern British Columbia and its Natural Resources and Environmental Studies Institute. Join us Wednesday, March 3 and learn more about opportunities to restore connectivity in rivers and streams. On Wednesday, March 24 find out how genetic analyses of char fish species are informing how they evolved and how they are managed. All sessions are free and start at 12 noon PST / 1 p.m. MST. Find out how to join, and access past presentations.

[MORE.](#)



Click on the image above to watch a recording of an excellent presentation last week about fishers from Wildlife Biologist Rich Weir.



The FWCP is a partnership between BC Hydro, the Province of B.C., Fisheries and Oceans Canada, First Nations, and public stakeholders to conserve and enhance fish and wildlife in watersheds impacted by BC Hydro dams.

[Subscribe to our e-letters!](#)

